

NOW TOGETHER AS

ERNST INSTRUMENTS

PROCESS OBSERVATION SOLUTIONS

LIQUID LEVEL GAUGES

Solutions to attach to the side of a tank to view the level of liquids inside the tank. We offer various types of these gauges for low and high pressure liquid or steam applications.

SERIES H13B

with Series V11B Valves

Armored Gauge:

- Up to 800°F
- Up to 3,270 PSIG
- Up to 300 WSP
- Reflex or Transparent Borosilicate Glass
- Aluminosilicate Glass for >600°F
- Continuous One-piece Chamber
- ASME B31.3 Compliant Materials
- Illuminators Available (Transparent Only)
- Other options available

End connected shown, side and back connect available.



SERIES T11, T13, T14, T16

Tubular:

- Great Value
- Offerings up to 500°F
- Steam capable options
- Automatic Ball Checks
- Other options available

Traditional Tubular Glass fitted between two valves. Ideal for lower pressure Tanks and Boilers. Standard fitted Ball Checks add a layer of product loss protection.



SERIES F11

Magnetic Level:

- Up to 1,000°F, or as low as -325°F
- Electronics, Transmitters & Switches options
- Up to 4,200 PSIG
- Low Maintenance
- Powerful Magnetic Float
- ASME B31.1
- Other options available

Magnetic Level Gauges make for a great alternative that offer higher visibility than traditional glass gauges. Can be fitted with LED Illumination and other Electronics to enhance readability, including transmitters to eliminate the need to verify tank levels in person.



SERIES J14

Shielded:

- Up to 400°F
- Up to 600 PSIG
- Built-in glass protection
- Rate-height options
- Lengths up to 50 feet
- Custom Scales
- Other options available

Available in multiple configurations. From Top-vented Tank gauges to Tubular Glass Replacements.



**OVER 15,000 ITEMS IN STOCK
& READY TO SHIP!!!**



SIGHT FLOW INDICATORS

These products provide an opportunity to view the flow in process piping. We offer various solutions for most pressures and chemical applications, customized to your needs in an array of materials, indicators, seals and connection types. Our product lines offer many solutions from low cost economical units to high-end customized units.

SERIES S12A

Threaded Bulls-eye:

- Up to 500°F
- Full ASME 150# Pressure Ratings
- Steam Service Option
- 1/2" to 2" NPT
- Indicator options available



SERIES S14TB

Threaded Retainer style Bulls-eye:

- Up to 500°F
- Full ASME 150# Pressure Ratings
- Gaseous/Steam Service Option
- 1/4" to 2" NPT
- Indicator options available

SERIES S16TB

High Pressure Bulls-eye Threaded:

- Up to 500°F
- Up to ASME 1500# Pressure Ratings
- 1/4" to 2" NPT
- Indicator options available



SERIES S17B

Threaded Ball Indicator:

- 150 PSIG @ 120°F
- 1/4" to 1" NPT
- Low cost

SERIES S18T

Threaded Full View:

- Up to 400°F
- Up to 150 PSIG
- 1/2" to 4" NPT
- Custom Lengths
- Other Options Available



SERIES S21

Plastic Full View:

- Up to 293°F
- Up to 150 PSIG
- 1/2" to 2" NPT; 1-1/2" to 8" Wafer

90° SIGHT FLOWS

Features:

- Up to 500°F
- Full ASME 150# or 300# Pressure Ratings
- 1" to 6" Flanged ASME 150#
- Drip-Tube options available



SERIES S13

Threaded/Flanged O-ring Seal Style:

- Up to 400°F
- To to 400 PSIG
- 1/2" to 2" NPT: 1/2" to 20" ASME 150#
- Indicator options available



SERIES S14FB

150# ASME Flanged Bulls-eye:

- Up to 500°F
- Full ASME 150# Pressure Ratings
- Gaseous/Steam Service Option
- 1/2" to 16" Flanged ASME 150#
- Indicator options available

SERIES S16FB

High Pressure Bulls-eye Flanged:

- Up to 500°F
- Up to ASME 1500# Pressure Ratings
- 1/2" to 8" 300#/600#; 1/2" to 2" for 1500#
- Indicator options available



SERIES S11

Low Pressure Bronze:

- Up to 200°F
- Up to 125 PSIG
- 1/2" to 2" NPT
- Economical

SERIES S18F

Flanged Full View:

- Up to 400°F
- Up to 150 PSIG
- 1/2" to 6" ASME 150# Flanges
- Custom Lengths
- Polycarbonate shielded



SERIES S24F

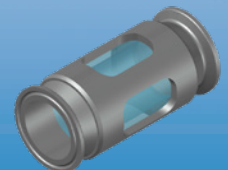
Flanged Flare-Through:

- Only PTFE Wetted
- Non-wetted 316 Stainless
- Custom Lengths
- 1" to 4" ASME 150# Flanges
- Up to 300°F & 150 PSIG

HYGIENICS

Features:

- Designed for Sanitary Applications
- Up to 150 PSIG
- Up to 400°F
- 1/2" to 4" Tri-Clamp connections



SIGHT WINDOWS

Offer the ability to view into tanks or add lighting inside to observe the process media. We offer solutions for low cost low pressure applications, ASME Rated applications, and high pressure impact-resistant fused glass.

SERIES W11

Bolt-on:

- Easy bolt-on
- Up to 500°F
- Full ASME 150# Pressure Ratings
- 1" to 8" Flanged ASME 150#
- Steam service options



SERIES W11

Weld Neck:

- Up to 500°F
- Full ASME 150# Pressure Ratings
- 1" to 6" Flanged ASME 150#

SERIES W11

Weldpad:

- Up to 500°F
- Full ASME 150# Pressure Ratings
- 1" to 8" Flanged ASME 150#
- Steam service options



SERIES W12

Low Pressure Weldpad:

- Up to 500°F
- 150 PSIG
- Weld-pad design
- Ideal for low pressure installations



SERIES W16-SF

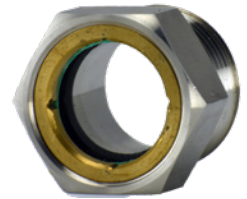
Extreme Pressure Fused-Glass:

- Up to 1450 PSI
- Up to 536°F
- Impact resistant Fused-Glass
- 1/4" to 3" NPT

SERIES W16-MP

Medium Pressure Sight Plug:

- Up to 400°F
- UP to 250 PSIG
- 1/2" to 3" NPT
- Optional reflector and ball float
- Ideal for medium pressure applications



FLOW METERS

Solutions to measure gas or liquid flow rate and/or totalization. Available in Analog or Digital configurations with multiple output options.

SHUTTLE TYPE

Features:

- Economical
- In-line Shuttle Type
- Up to 230°F
- Up to 250 PSIG
- 1/2" to 1-1/2" NPT



SERIES M12

Threaded/Wafer Differential Bellow:

- Up to 400 PSIG
- Up to 350°F
- Analog or Digital
- 1/4" to 8" Wafer available
- 1/4" to 3" NPT available



We are an authorized distributor of GPI & Flomec Digital flow meters.



SERIES GPI-G2

Turbine:

- Accuracy +/-5%
- On-board configurable display
- 1/2" - 2" NPT & Tri-clamp Connections
- Up to 3000 PSIG
- Other Electronic Options Available



SERIES GPI-OM

Oval Gear:

- High Accuracy +/-1%
- Ideal for viscous fluids
- Up to 5800 PSIG
- Bi-Directional flow measurement

SERIES GPI-TM

PVC Water:

- Up to 140°F
- Up To 225 PSIG
- 1/4" to 2" NPT; 3" & 4" Flanged
- On-board configurable display



SERIES GPI-A1

Light Weight Aluminum:

- On-board configurable display
- 1" NPT, ISO or BSPP
- Low flow Option Available
- Designed for petroleum



AND SO MUCH MORE!

Aside from the main lines, we offer a host of other products to fit your needs.

- Replacement Gaskets, Glass and Plastic Tubing readily available to cut to your specifications.
- Custom sized Flat Glass and Gaskets.
- Accessories for Liquid Level Gauges, such as Protectors.
- Level Sensing switches
- Sampling & Pet Cocks
- Air Cocks



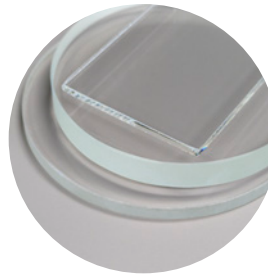
ILLUMINATORS



EDUCTORS & EJECTORS



**SERIES G12
PLATE GLASS**



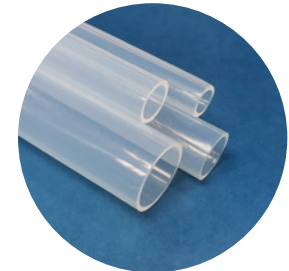
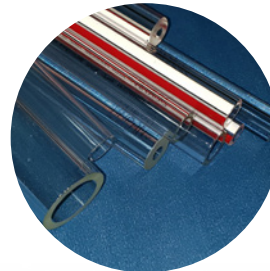
**SERIES G17 - FLAT GASKETS
SERIES G18 - TUBULAR GASKETS**



**SERIES G11-584
BUTLER BEVEL SEALS**



SERIES G11 - GLASS & PLASTIC TUBING



**SERIES G14 - Armored Gauge Glass
SERIES G15 - Armored Gauge Gaskets**



Visit our Website for more information & offerings at...

ERNSTINSTRUMENTS.COM

or call us...

+1 (973) 940-1600



11/24